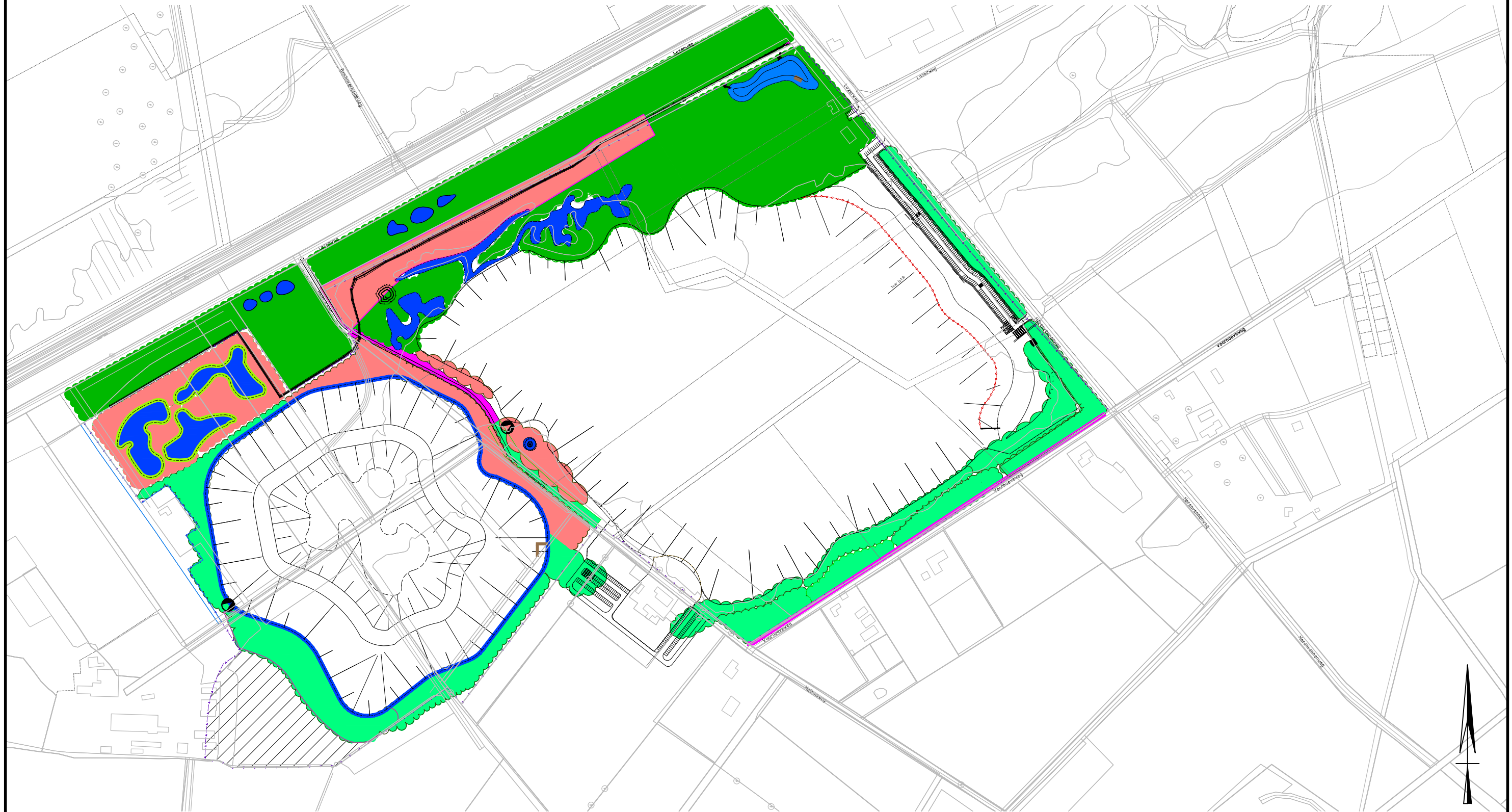









Centrale zandwinning Weert Inrichtingsplan



Natuurdoeltypen

	N14.02 Hoog- en laagveenbos (11.7ha)		N05.01 Moeras (0,2ha)		N04.02 Voedselrijke Plas (visplas) (0.3ha)
	N06.04 Vochtige Heide (5.4ha)		N15.02 Dennen-, Eiken- en Beukenbos (7.1ha)		N07.01 Droge Heide (0.25ha)
	N06.05 Zwakgebufferd Ven (1.8ha)				

Tek. nr. 306007-T103-IP-C07-L04
Datum : 09-07-2018