

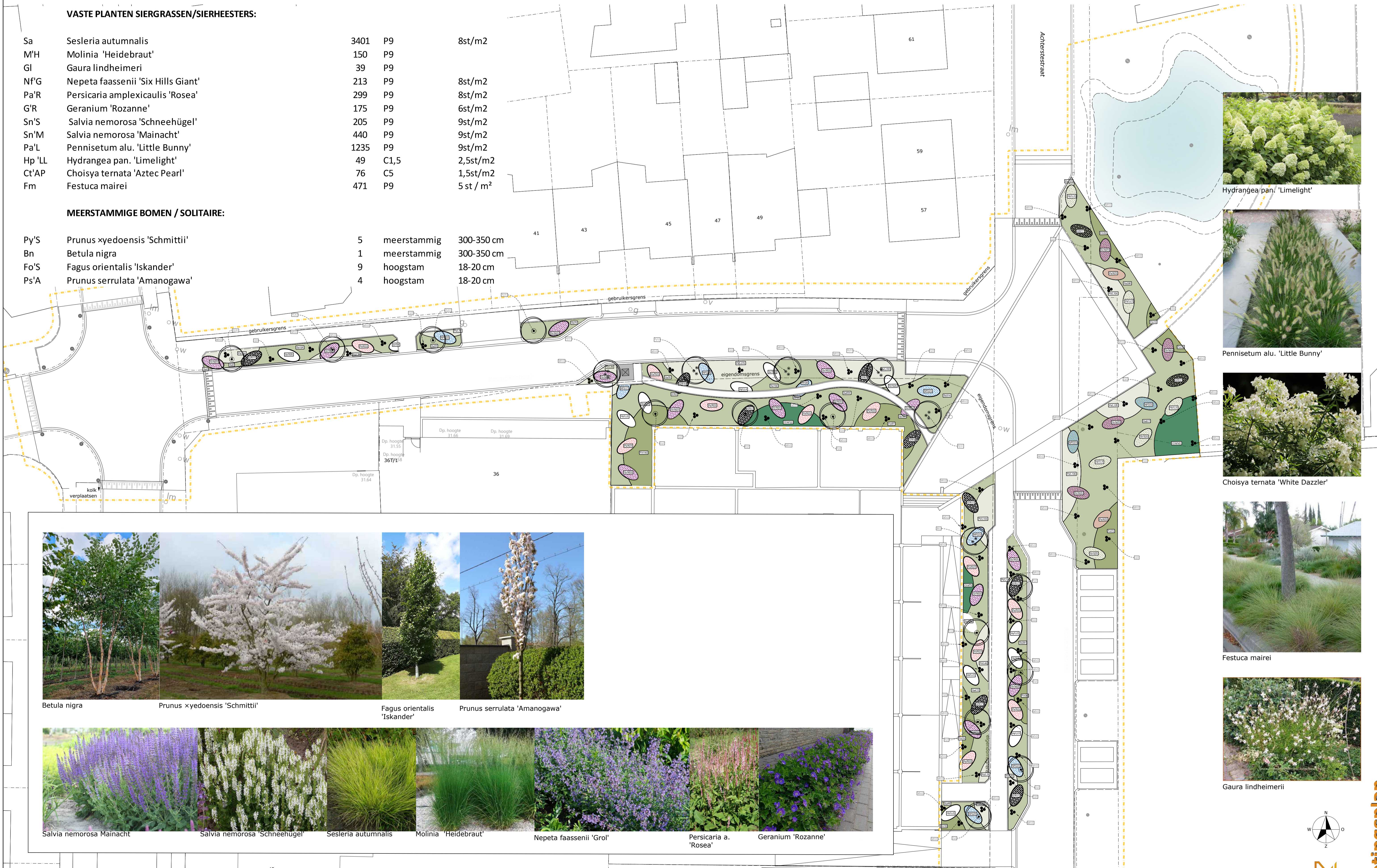
Beplantingsplan Beemdenstraat 38

VASTE PLANTEN SIERGRASSEN/SIERHEESTERS:

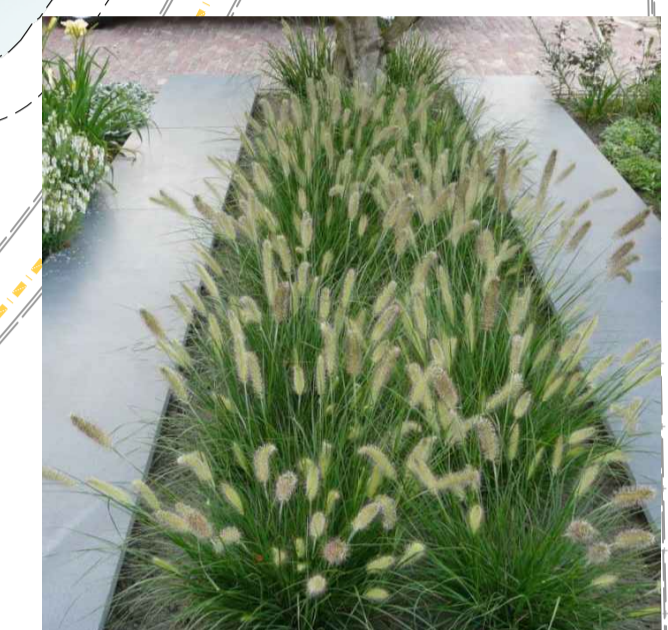
Sa	Sesleria autumnalis	3401	P9	8st/m2
M'H	Molinia 'Heidebraut'	150	P9	
GI	Gaura lindheimeri	39	P9	
Nf'G	Nepeta faassenii 'Six Hills Giant'	213	P9	8st/m2
Pa'R	Persicaria amplexicaulis 'Rosea'	299	P9	8st/m2
G'R	Geranium 'Rozanne'	175	P9	6st/m2
Sn'S	Salvia nemorosa 'Schneehügel'	205	P9	9st/m2
Sn'M	Salvia nemorosa 'Mainacht'	440	P9	9st/m2
Pa'L	Pennisetum alu. 'Little Bunny'	1235	P9	9st/m2
Hp 'LL	Hydrangea pan. 'Limelight'	49	C1,5	2,5st/m2
Ct'AP	Choisya ternata 'Aztec Pearl'	76	C5	1,5st/m2
Fm	Festuca mairei	471	P9	5 st / m ²

MEERSTAMMIGE BOMEN / SOLITAIRE:

Py'S	Prunus xyedoensis 'Schmittii'	5	meerstammig	300-350 cm
Bn	Betula nigra	1	meerstammig	300-350 cm
Fo'S	Fagus orientalis 'Iskander'	9	hoogstam	18-20 cm
Ps'A	Prunus serrulata 'Amanogawa'	4	hoogstam	18-20 cm



Hydrangea pan. 'Limelight'



Pennisetum alu. 'Little Bunny'



Choisya ternata 'White Dazzler'



Festuca mairei



Gaura lindheimeri



Betula nigra



Prunus xyedoensis 'Schmittii'



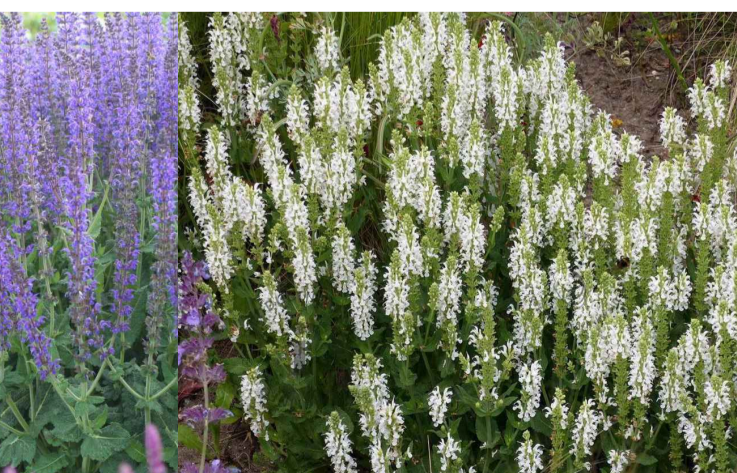
Fagus orientalis 'Iskander'



Prunus serrulata 'Amanogawa'



Salvia nemorosa Mainacht



Salvia nemorosa 'Schneehügel'



Sesleria autumnalis



Molinia 'Heidebraut'



Nepeta faassenii 'Grol'



Persicaria a. 'Rosea'



Geranium 'Rozanne'

